



Technical Specification: The Phoenix Theatre

About Us: The Phoenix Theatre is part of the Phoenix Arts organisation, and we are the main arts provider in East Hampshire. We currently manage two venues with a new theatre joining the organisation at the end of 2024.

Contact Details:

Creative Venue Technician:

Sam Cole

07469 879348

sam.cole@phoenixarts.co.uk

Find Us:

The Phoenix Theatre & Arts Centre,
Station Road,
Bordon,
Hampshire,
GU35 0LR

Parking: We have 3 disabled bays and a total of 39 free parking bays surrounding the theatre. Overflow parking is available at BASE.

Accessibility: Our theatre is fully accessible with a direct entrance from the car park through to the theatre being all on one level.

Contents

1 Sound	4
1.1 Front Of House (FOH)	4
1.2 Microphones.....	5
1.3 Cabling	6
1.4 Video.....	6
2 Lighting.....	7
2.1 Lighting Control.....	7
2.2 Lanterns.....	7
2.3 Gels & Gobo's.....	7
2.4 Pre-Rigging	8
2.5 Miscellaneous.....	8
2.6 Lighting Plan/Grid Plan	8
3 Stage Layout	9
3.1 Stage	9
3.2 Theatre Layout	9

1 Sound

1.1 Front Of House (FOH)

FOH

- Yamaha Concert Club S112IV speakers mounted on proscenium arch.
- 2 x Samson Servo550 amplifier
- Allen & Heath SQ5 16 in 48 total

Additional FOH

- 2 x Peavey Messenger UL15
- 2 x Wharfedale SVP 1SE
- 2 x Peavey Pro Sub
- 2 x Skytec PA speaker 200W

Monitors

- 6 sends controlled from FOH desk

4 Active Monitors

3 Passive Monitors

1.2 Microphones

Microphones

- 4 Shure SM58
- 2 Shure SM57
- 1 Rode NT-USB
- 1 Behringer C4 condenser
- 3 Behringer XM8500 vocal dynamic
- 1 Shure PG 52
- 2 Shure PG 56
- 3 Shure PG 57
- 3 Shure PG 58

Microphone Stands

- 2 Round base microphone stands
- 8 Boom microphone stands (convertible to straight)
- 2 Low boom microphone stands

Direct Injection

- 2 Passive D.I. boxes
- 2 Stereo Active D.I. boxes

1.3 Cabling

Cables

- 1 installed balanced multicore (Box to DSL), 12up, 4back
- 1 30m balanced multicore (8up, 4 back)
- 1 10m 8way XLR loom
- Selection of, XLR, jack, XLR to Jack, Speakon, and phono cabling

1.4 Video

- NEC M420XG Projector mounted on FOH bar
- Viewsonic PA503W Projector
- Celexon folding frame screen (Front Projection Only) 366 x 274cm

2 Lighting

2.1 Lighting Control

- ETC 1 Universe Nomad controlled by Windows 10 Laptop
- 2 Zero88 24 Chilli Dimmers
- 32 onstage 2kW bar channels, 8 channels per bar over 4 bars.
- 12 FOH 2kW channels
- 2 onstage 2kW channels per side (1 SL, 1 SR)
- 1x Pulsar Minipack (3x 1kW – portable, for stage practicals)

2.2 Lanterns

- 6 CCT SIL30 1kW Profiles
- 8 CCT Minuette 650W Fresnels
- 1 CCT Minuette 650W Pebble Convex
- 2 Strand Patt23 500W Profiles
- 2 Strand Patt1 23 500W Fresnels
- 8 1kW Parcans (2xCP60, 6xCP62)
- 4 1KW Floods

2.3 Gels & Gobo's

- Happy to use gels if we have them inhouse. If we don't have what you need, Gels can be ordered on request and will incur an additional charge
- No inhouse Gobo's or Gobo holders

2.4 Pre-Rigging

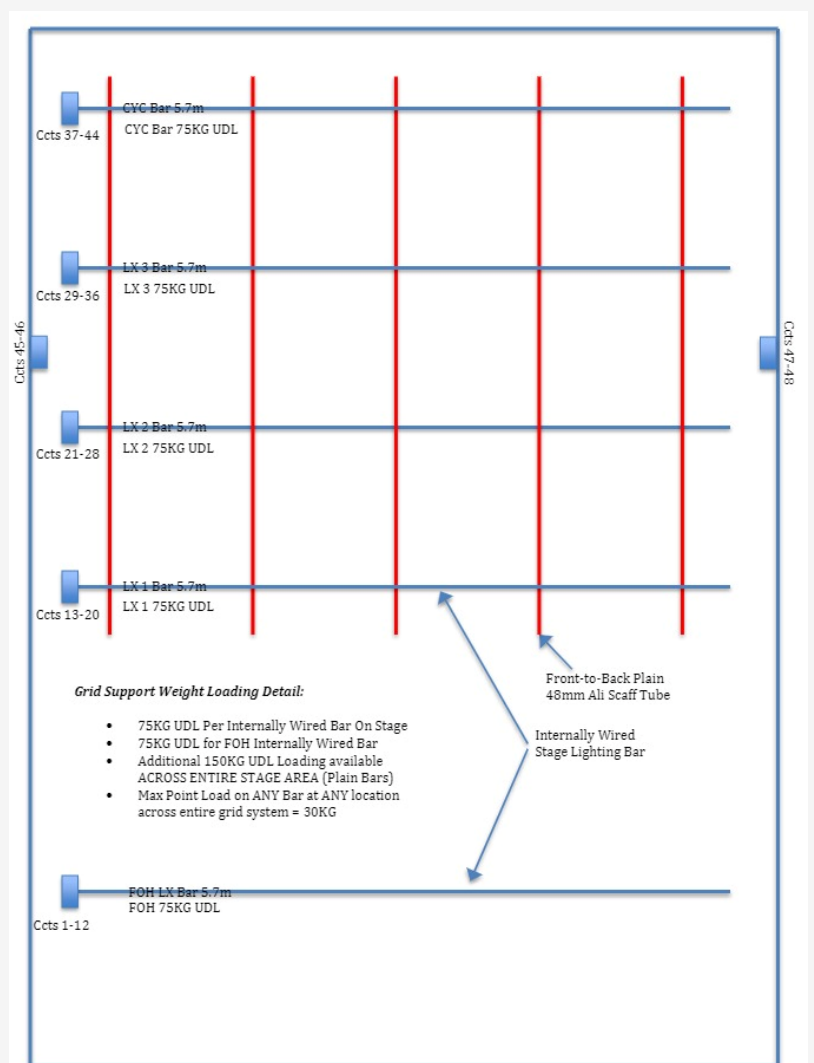
- On request, Pre-Rigging can be carried out.

2.5 Miscellaneous

- 2 Doughty Nebula 42 tripods (SWL 60kg)
- 2 additional full venue width portable lighting bars

2.6 Lighting Plan/Grid Plan

- Bar Support Layout, CCT allocation + loading detail
- Please Note – Stage DMX in sits with CCTs 44 & 45



3 Stage Layout

3.1 Stage

Stage Measurements

- The stage measurements assume use of the upstage curtain to create a black box
- This creates a backstage area with direct access to the dressing room

3.2 Theatre Layout

- Fixed seating only (75 Capacity)
 - Stage without curtain (5.7m Wide and 8.2m Deep)
 - Stage with curtain (5.7m Wide and 6m Deep)



View from auditorium



View from stage

- **1 Additional Row (83 Capacity)**

- Stage without curtain (5.7m Wide and 8.2m Deep)
- Stage with curtain (5.7m Wide and 6m Deep)



View from auditorium



View from stage

- **2 Additional Rows (92 Capacity)**

- Stage without curtain (5.7m Wide and 7.4m Deep)
- Stage with curtain (5.7m Wide and 5.2m Deep)



View from auditorium



View from stage

- 3 Additional Rows (100 Capacity)
 - Stage without curtain (5.7m Wide and 6.4m Deep)
 - Stage with curtain (5.7 Wide and 5.6m Deep)



View from auditorium



View from stage